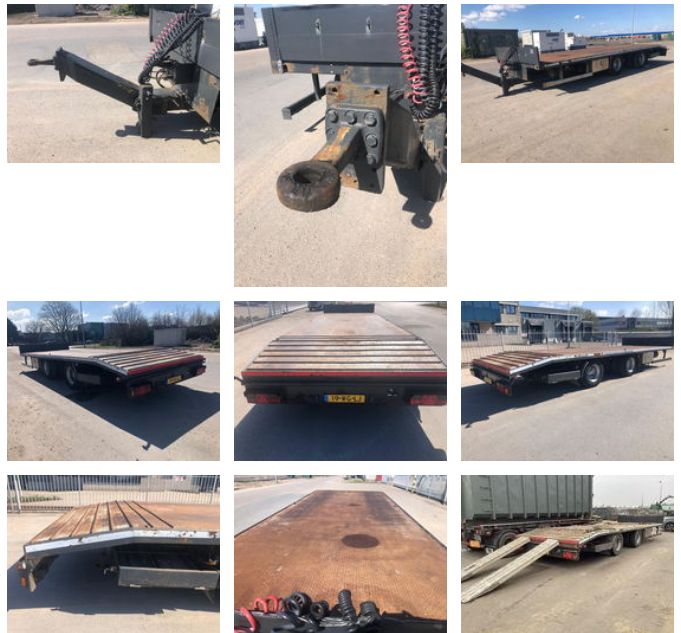




Panav TV16L - 2 As Wipkar Dieplader Open, 19-WG-LJ

General features

Brand	Panav
Subcategory	Other trailers
Licence plate	19-WG-LJ
Construction year	2004
Date of first registration	02-03-2004
Condition	Used



Characteristics

Empty weight	3.880kg
Load capacity	14.120kg
GWV	18.000kg
Length	903cm
Width	255cm

Panav TV16L - 2 As Wipkar Dieplader Open, 19-WG-LJ

Technical specifications

Number of axes

2

Accessories

- Anti-lock braking system
- Air suspension
-
-
-
-
-
-