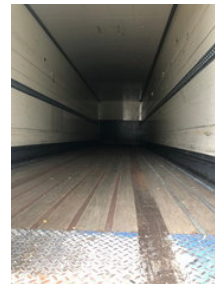




LAG O-2-30 01 0-2-3001 2 As Oplegger Gesloten OK-35-NT

General features

Brand	LAG
Subcategory	Closed box
Licence plate	OK-35-NT
Construction year	2008
Date of first registration	19-08-2008
Condition	Used



Characteristics

Empty weight	7.270kg
Load capacity	22.730kg
GVW	30.000kg

Length 1.350cm

Width 250cm

LAG O-2-30 01 0-2-3001 2 As Oplegger Gesloten OK-35-NT

Technical specifications

Number of axes

2

Accessories

- Anti-lock braking system
- Spare wheel
- Air suspension system
- Disc brakes
-
-
-