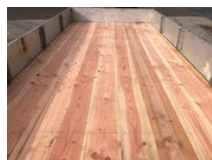




EURO TRAILER 2 As Tandem as Aanhangwagen Open, WK-74-PX

General features

Brand	EURO TRAILER
Subcategory	Drop side
Licence plate	WK-74-PX
Construction year	1993
Date of first registration	20-10-1993
Condition	Used



Characteristics

Empty weight	524kg
Load capacity	1.476kg
GVW	2.000kg
Length	0cm
Width	198cm

EURO TRAILER 2 As Tandem as Aanhangwagen Open, WK-74-PX

Technical specifications

Number of axes	1
----------------	---

Accessories