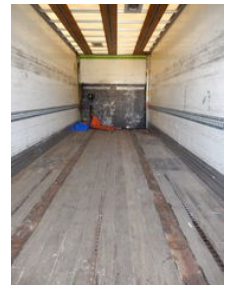




Burg 2 as Wipkar Gesloten - Doorlader - T.b.v. Stalling en Opslag

General features

Brand	Burg
Subcategory	Centre axle
Construction year	1996
Date of first registration	17-01-1996
Color	Other
Condition	Used
Reference	2 As Burg Wipkar Doorlader



Characteristics

Empty weight	6.500kg
Load capacity	11.500kg
GWV	18.000kg
Length	1.030cm
Width	256cm

Burg 2 as Wipkar Gesloten - Doorlader - T.b.v. Stalling en Opslag

Technical specifications

Number of axes

2

Accessories

- Toolbox
- Air suspension
-
-
-
-
-
-