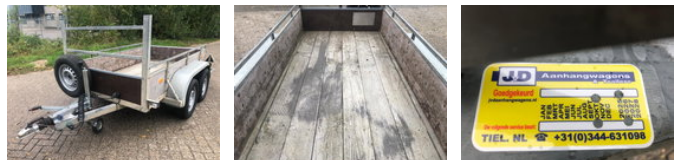




Anssems AS2000VV Tandem as Aanhangwagen Open, WF-68-FH

General features

Brand	Anssems
Subcategory	Drop side
Licence plate	WF-68-FH
Construction year	1990
Date of first registration	21-06-1990
Condition	Used



Characteristics

Empty weight	436kg
Load capacity	1.564kg
GVW	2.000kg
Length	0cm
Width	161cm

Anssems AS2000VV Tandem as Aanhangwagen Open, WF-68-FH

Technical specifications

Number of axes 1

Accessories

- Spare wheel
-
-